

**POUYA JOUDAKI**  
**Prudential Sussex Realty**



2397 Marine Drive,  
 West Vancouver, B.C. V7V 1K9  
 Cell 604.779.6306  
 info@joudaki.com  
 www.joudaki.com

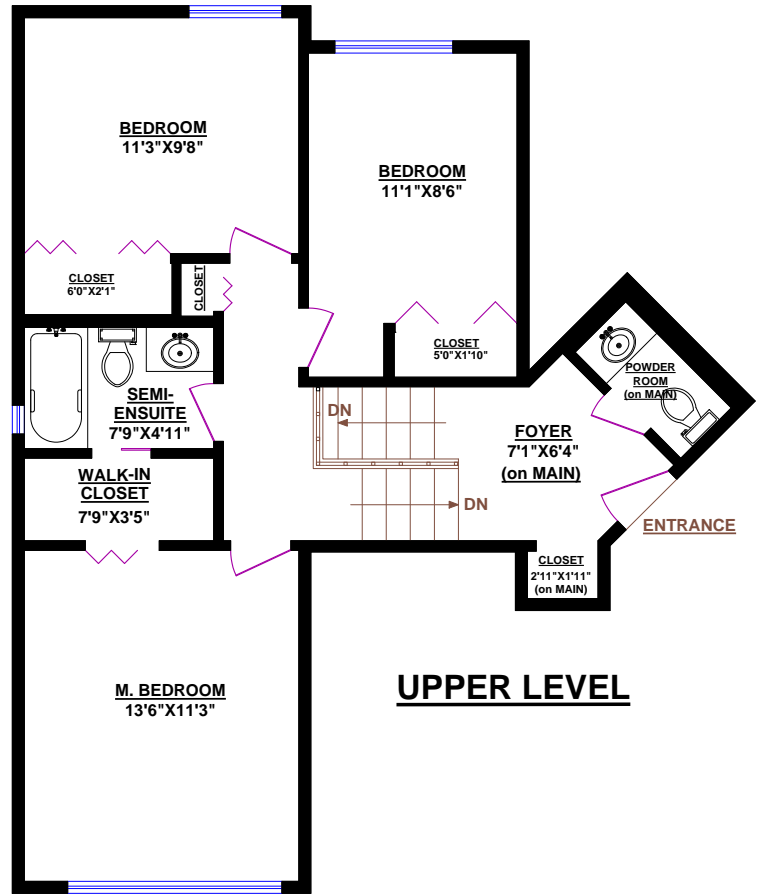
**1233 MILL STREET, NORTH VANCOUVER**

**TOTALS\***

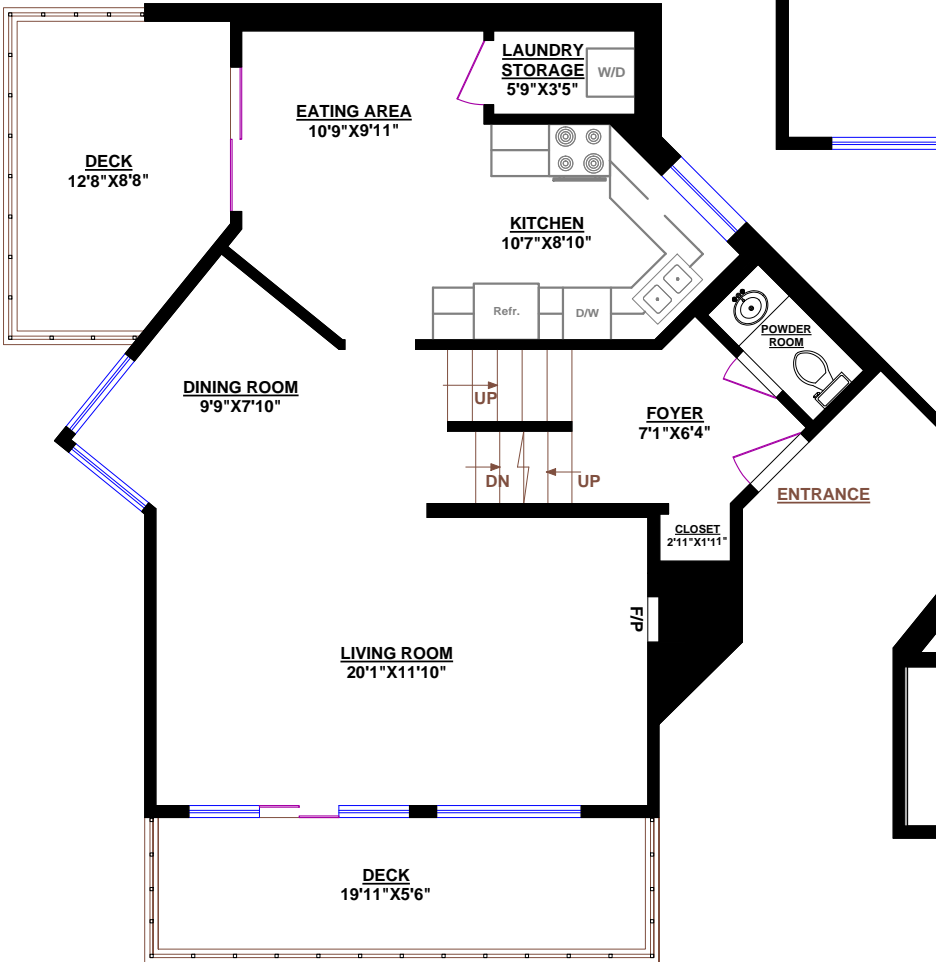
Main Floor (finished): 781 sq.ft.  
 Upper Level (finished): 594 sq.ft.  
 Lower Level (finished): 99 sq.ft.  
**TOTAL FINISHED: 1,474 sq.ft.**  
 Lower Level (unfinished): 58 sq.ft.  
**GRAND TOTAL: 1,532 sq.ft.**

**OTHER AREAS:**  
 Carport: 354 sq.ft.  
 Deck: 109 sq.ft.  
 Deck: 102 sq.ft.

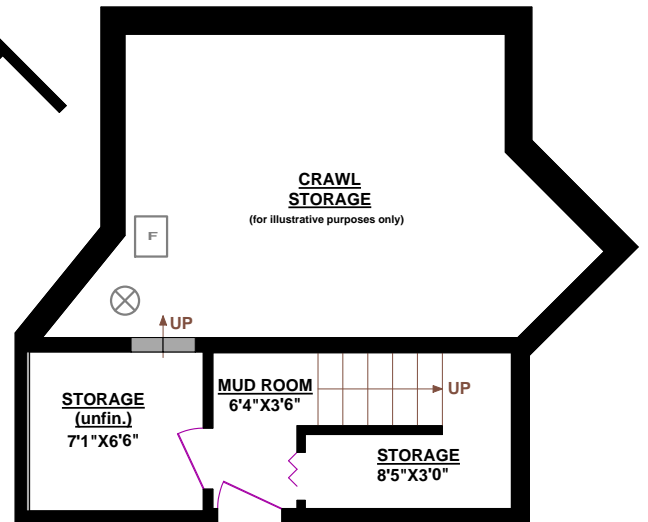
\* These measurements are not taken from the Strata Plan.



**UPPER LEVEL**



**MAIN FLOOR**



**LOWER LEVEL**

